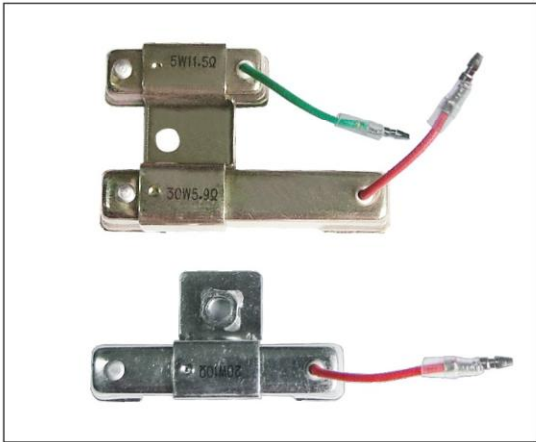
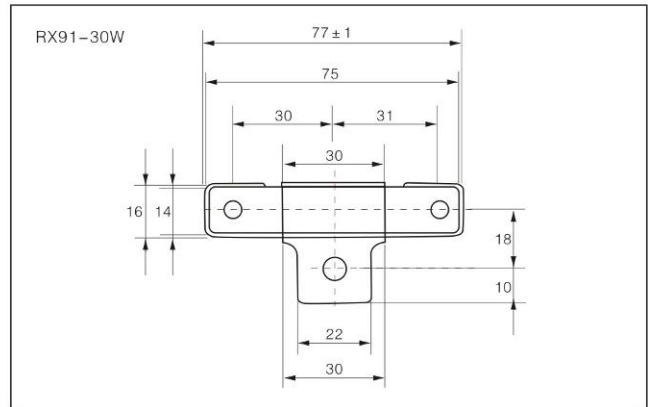
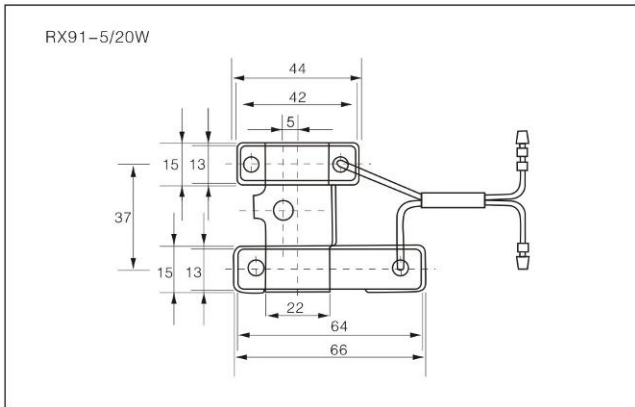
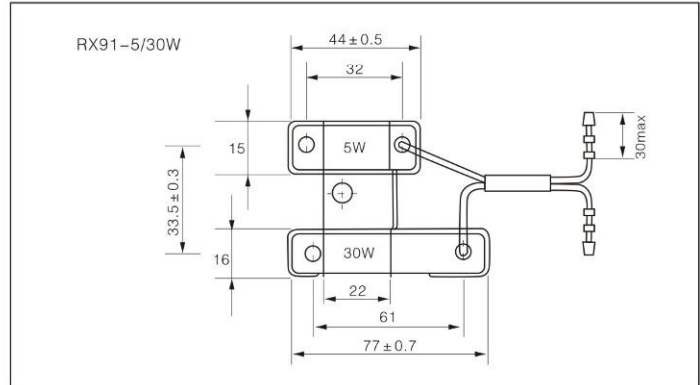


RX91 resistors for motorcycle



Construction(mm)



Features

- High-strength case
- Good ability of shock-proof
- Two different power of resistors combined in one case

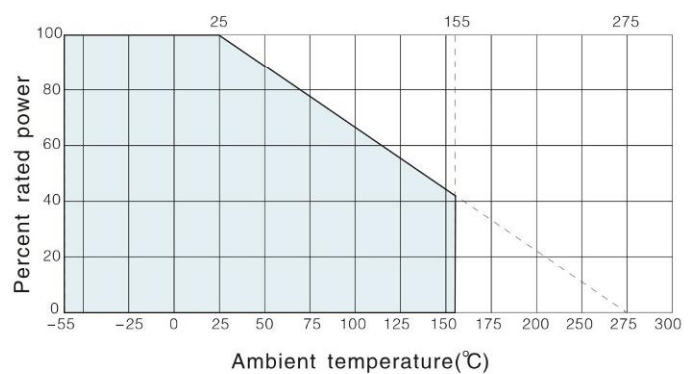
Applications

- Big size lamps of motorcycle
- Release circuit

Reference Standards

Q/ATK027-2002

Derating Curve



■ Technical Specifications

Type	Rated power Ambient temperature	Resistance range		Tolerances	TCR (10 ⁻⁶ /K)	Insulation Voltage
		Min	Max			
RX91-5W	5W	1R0	3K6	±5% ±10%	±250	700V
RX91-20W	20W	4R7	4K7			
RX91-5W/20W	5W, 20W	1R0, 4R7	3K6, 4K7			
RX91-20W/20W	20W, 20W	4R7, 4R7	4K7, 4k7			
RX91-30W	30W	5R1	5K1			
RX91-5W/30W	5W, 30W	1R0, 5R1	3K6, 5K1			
RX91-30W/30W	30W, 30W	5R1, 5R1	5K1, 5K1			

■ Performance

Test Item	Specifications	Test Method
Long term load life	$\Delta R \leq (3\%R + 0.05\Omega)$	70°C, 1.5P _R , 200h
Damp heat, steady state	$\Delta R \leq (5\% + 0.05\Omega)$	40°C, RH93 ± 3%, 21d
Terminal tensile strength	$\Delta R \leq \pm (1\% + 0.05\Omega)$	10N, 10S

■ How To Order

Example

RX91	5W	5R1	±10%	±250(10 ⁻⁶ /K)	Boxes
Type	Power	Nominal Value	Tolerance	TCR	Packaging
RX91	5W 20W 30W	5R1 1R0 5R1	±10%	±250(10 ⁻⁶ /K)	box